

# uIBX-250-BW

Embedded System  
Introduction and  
Case Study



# ► uIBX-250-BW Product Features

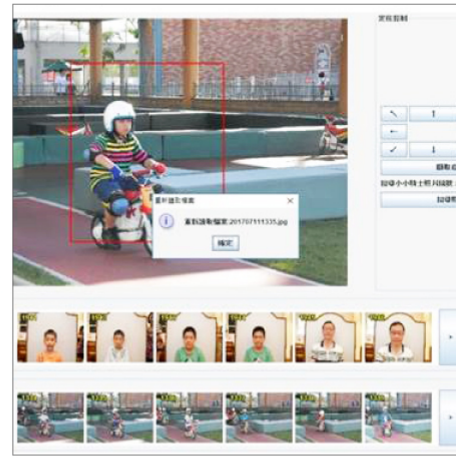


- Fanless system with Intel® Celeron® N3160 processor
- Dual display
- Two RS-232/422/485
- Full-size PCIe Mini slot for expansion
- Four USB 3.0 ports
- Two GbE LAN ports



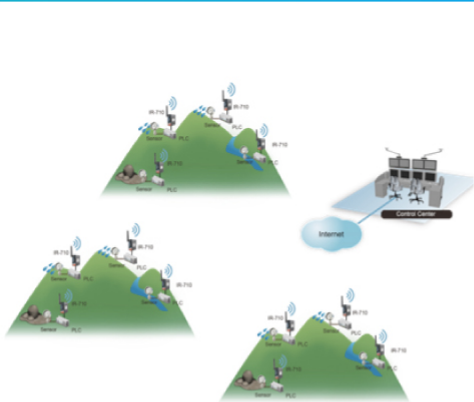
# ► Case Study 1

## Outdoor playground equipment , dynamic camera system



## ► Case Study 2

- Hillside and river water level monitoring
- Unmanned water level monitoring station which is used for flood control and disaster warning alert





# ► Case Study 3

## Sewing machine capacity data collection in shoe factory



# ► Case Study 4

## Grinder system controller





## ▶ Case Study 5

- Automated product inspection
- Electric fence for motion detection

